

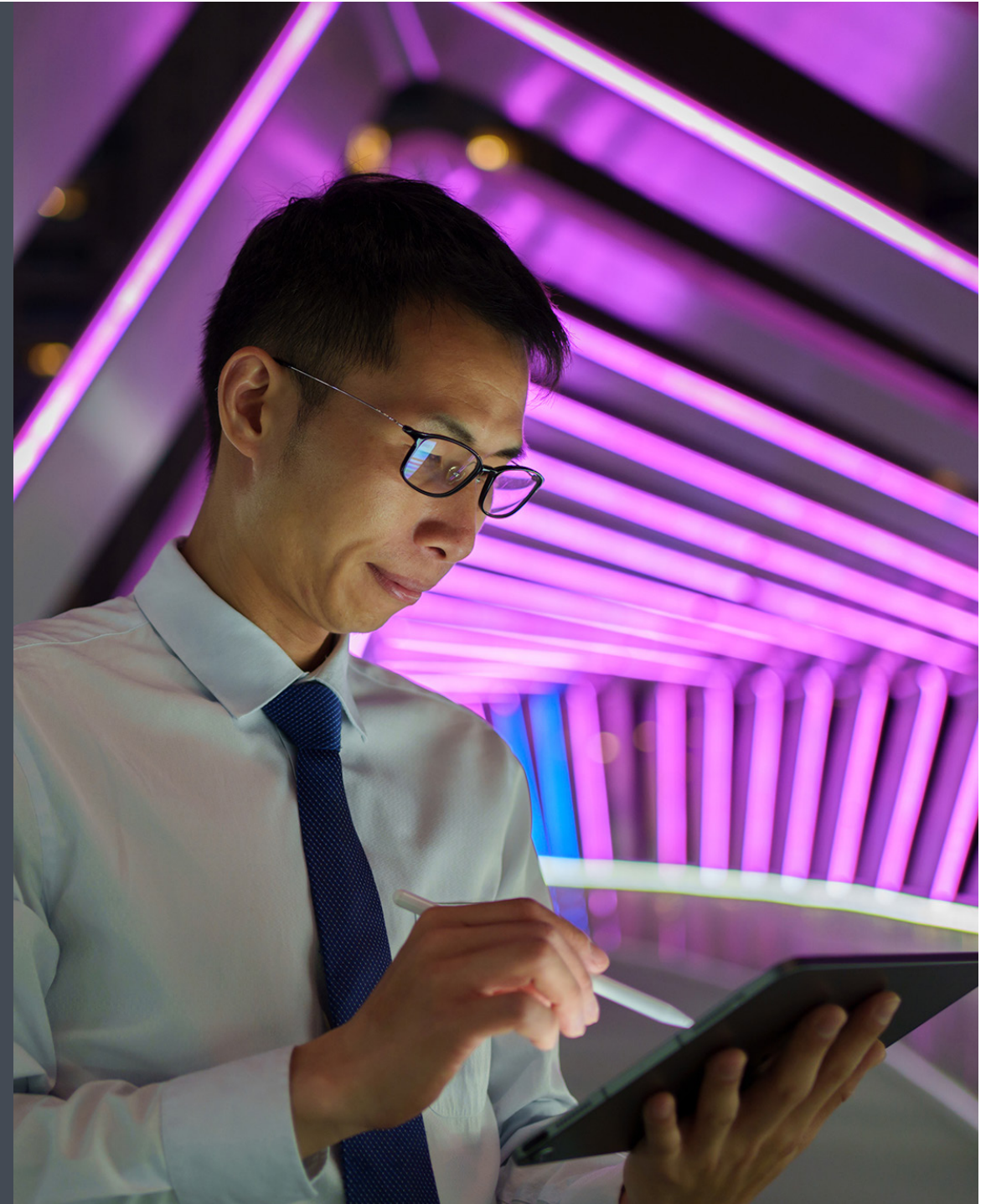


# MSX MobilityNext: A complete solution for modern fleet management

**Revolutionize your rental operations and enhance efficiency**

The long-term rental (LTR) industry faces increasing operational challenges driven by evolving customer expectations, regulatory changes, and the need for sustainable practices. To overcome these obstacles, fleet managers require digital solutions to optimize fleet utilization, enhance booking efficiency, and improve customer experience.

**MSX MobilityNext** combines cutting-edge technology with deep automotive expertise to deliver a fully integrated, end-to-end mobility management system. Designed to empower long-term rental (LTR) companies, it ensures operational efficiency, customer satisfaction, and sustainable growth. It is a strategic solution in your mobility journey, ensuring mobility to your customers through pre-lease and relief booking management.







# Designed for impact across operations

By integrating seamlessly with existing systems, MSX MobilityNext provides access to the most up-to-date information and guidance, ultimately enhancing overall service and improving customer satisfaction.

- **Fleet optimization with AI:** Maximizes vehicle availability and reduces downtime.
- **End-to-end digital integration:** From booking to remarketing, manage every stage of the rental lifecycle with a single, connected solution.
- **Multi-market scalability:** Operate confidently across borders with built-in regulatory compliance and localization features.
- **Seamless API-based integration:** Easily connect with your existing leasing software and platforms for uninterrupted workflows.
- **Data-driven decision making:** Leverage real-time dashboards and analytics to optimize fleet utilization and service delivery.
- **Sustainable fleet prioritization:** Promote EV and hybrid bookings to reduce environmental impact and align with your ESG goals.

# The process behind MSX MobilityNext

MSX MobilityNext is designed to transform your fleet management operations through a seamless and intelligent process.



## Data input and collection

Aggregate fleet data, booking requests, and specific queries entered by fleet operators and customers to build a complete operational picture.



## Advanced Data Analysis

Identify trends, predict demand, and generate actionable insights using historical and real-time data to help optimize fleet utilization and improve overall efficiency.



## Instant Guidance and Instructions

Deliver step-by-step fleet management instructions and documents to support fast, informed decision making.



## Continuous Learning and Improvement

Adapts to feedback and evolving conditions to refine and improve recommendations and outcomes over time.





# Accelerate fleet optimization with MSX MobilityNext

Advanced AI insights and real-time guidance help detect and resolve fleet management issues through a simple user interface. Early deployments have demonstrated increased operational efficiency and cost savings, enhancing overall productivity and customer satisfaction.

## **30% increase in fleet utilization**

Our solution ensures vehicles are always in use.

## **25% reduction in operational costs**

Automation removes inefficiencies

## **Improved CX and conversion rates**

Driven by a digital-first booking system.

## **Faster vehicle turnaround**

Drive by predictive maintenance.

## **Higher satisfaction and loyalty**

Driven by enhanced self-service Features.



# Why choose MSX MobilityNext?

Choosing MSX MobilityNext means opting for a transformative solution in the long-term rental (LTR) industry. Our AI-driven fleet and mobility management platform is purpose build to streamline rental operations and maximize efficiency.

At MSX, our deep industry-specific knowledge, advanced technologies, and global presence enable us to deliver solutions that address the unique challenges of the LTR industry. Our seamless API-based integration works with existing leasing software and platforms, making it easy to adopt and scale. Additionally, our data-driven decision-making capabilities provide real-time insights, helping you make informed choices to optimize fleet utilization and reduce downtime.

With MSX MobilityNext, you can expect significant business benefits, including increased fleet utilization, reduced operational costs, and improved booking conversion rates. Our platform's flexibility allows you to adapt to diverse employee needs and job market trends, ensuring consistent and effective training.







## **Transform long-term rental operations with MSX MobilityNext**

Unlock unparalleled efficiency and sustainability.

**Experience the transformative power of MSX MobilityNext firsthand. See how you can increase fleet utilization, reduce operational efficiency, and improve CX with our cutting-edge, AI solution.**



**[www.msxi.com/mobilitynext](https://www.msxi.com/mobilitynext)**

AI-powered support, designed for the future of mobility.  
Optimize. Innovate. Succeed.